



CRI140 stainless steel AISI 316 housing

- ✓ stainless steel AISI 316 housing
- ✓ weatherproof rating IP68
- ✓ wall, ceiling, pole, corner mounting
- ✓ easy fastening and positioning
- ✓ wide range of accessories



Stainless steel housing

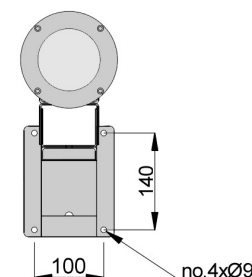
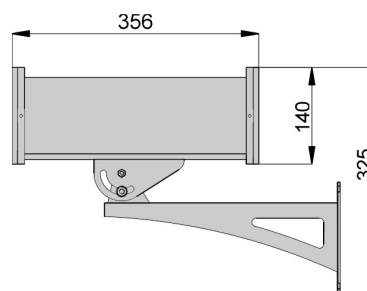
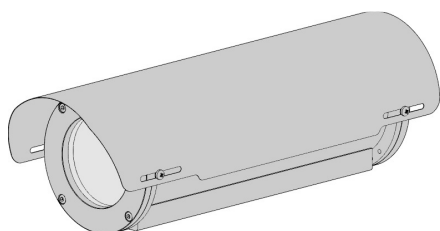
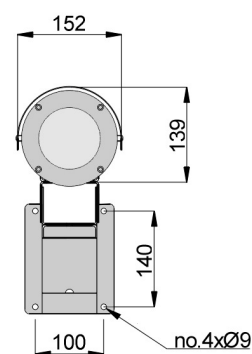
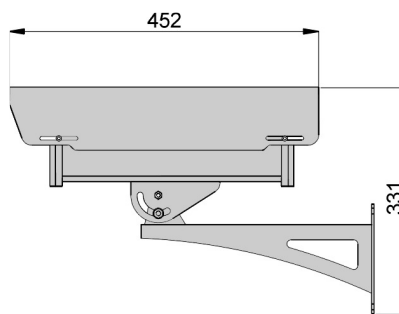
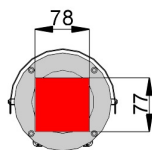
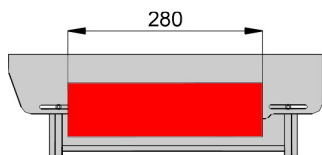
The **CRI140** is a weatherproof housing entirely made of stainless steel AISI 316. It can be installed in special environments such as marine, industrial, chemical and where the external agents are highly corrosive. It can be equipped with the special front cover with an air barrier which prevents the formation of dust.

CRI140

- DATA SHEET -

camera housing

Useful internal lenght



the values are in millimeters

TECHNICAL DATA

GENERAL

- body made in stainless steel AISI316
- sunshield in stainless steel AISI316 with wide range of adjustment
- stainless steel bolts and screws
- wall bracket made in stainless steel AISI316
- extractable slide-out unit with looking system
- heater
- wide range of accessories
- supplied with instruction manual
- according to RoHS compliance

ELECTRICAL

- heater 230-110-24-12 Vac
consumption max. 30W
t on 15°C t off 22°C +/- 3°C

MECHANICAL

- usable internal space 78x77mm.(BxH) or Ø 95
- useful lenght: 280mm
- glass window Ø 90mm.
- weatherproof rating IP68
- indoor/outdoor installations
- operating temperature with heater from -20°C to +60°C
- weight 8 Kg. (KIT version+ST160)

ACCESSORIES

- FA140** front cover with air barrier
- FG140** front cover with Germanium glass
- VI140** internal ventilation set pre-assembled
- AL140/A** power supply 230/12Vdc 1,3A
- AL140/B** power supply 230/24Vac 500mA

RELATED PRODUCTS

- SP/C** pole adaptor AISI316
- SA/C** corner adaptor AISI316

code	unit weight (Kg.)	package dimensions (cm.) WxHxL	package weight (Kg.)
KIT CRI140 + ST160	8 (tot.)	19,0 x 15,0 x 46,0 19,0 x 15,0 x 46,0	8,40 (tot.)

Specifications are subject to change without notice, weights and dimensions are indicative.

rev.2112

GLOBAL PROOF S.r.l.

Via dell'Industria, 10 36013 Piovane Rocchette (VICENZA) ITALY
phone +39.0445.396190 fax +39.0445.395000

info@globalproof.it

www.globalproof.it