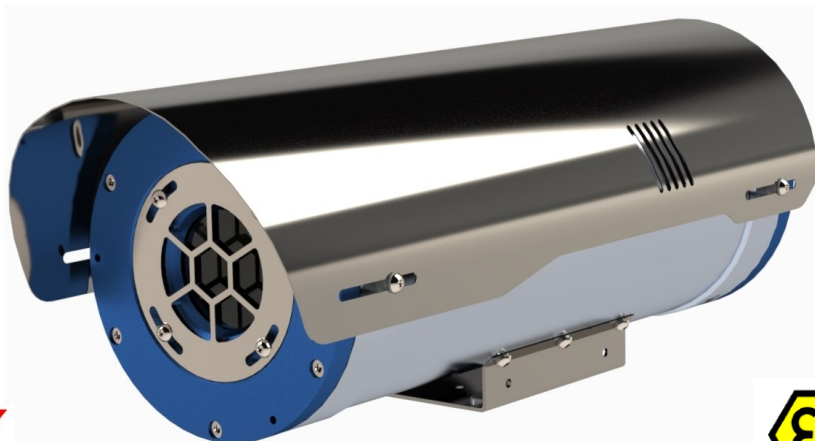


DATASHEET

EXCMA940 Thermal Explosion proof camera housing

- Anticorodal aluminium ATEX housing for hazardous areas
- Certifications EX d for use in Zone 1 and 2, Group IIC (gas) and Ex tb Zone 21 e 22 (dust)
- Weatherproof rating IP66/67/68
- Germanium glass for thermal cameras
- The housing is supplied with two threaded holes for metric cable glands M25 (3/4" NPT on request)
- Possibility to wall or ceiling mounting by apposite brackets
- Easy installation and maintenance

 Thermal

Explosion proof housing made of Anticorodal aluminium for thermal cameras

The **EXCMA940 Thermal** is a cylindrical explosion proof housing, made of Anticorodal aluminium with anodic treatment, that ensures a high corrosion resistance and makes the housing particularly indicated for installations in marine, industrial and chemical environments, where there is a potentially explosive atmosphere.

As standard this housing is supplied with the Germanium glass studied for thermal cameras applications. It has a good optical performance: from 7,5 to 14µm.

The housing is supplied with two holes with metric thread M25 or 3/4"NPT (the latter is available on request). The housing can be equipped with a full range of solutions: sealing ring for unarmoured cable, sealing ring for steel wire armoured (SWA) cable, barrier gland for unarmoured cable and barrier gland for steel wire armoured (SWA) cable.

DATASHEET

TECNICAL DATA

GENERAL

- body in aluminium Anticorodal
- anodic oxidation treatment for excellent resistance to extreme environments
- stainless steel bolts and screws
- wide range of accessories
- supplied with instruction manual
- according to RoHS compliance

ELECTRICAL

- heater: 230V-110V, 24V, 12V
consumption max. 80W
t on +15°C t off +22°C (+/- 3°C)
- max power consumption of devices installed inside of the housing (camera/lens): 20W max.
- max power delivered by internal power supply (if present) available for camera/lens: 12W max.

ACCESSORIES



- AL910/A** power supply 230/12Vdc 1,3A
- AL910/B** power supply 230/24Vac 500mA
- AL910/C** power supply 230/12Vdc 2,1A
- AL910/D** power supply 230/24Vdc 1,1A
- AL910/E** power supply 24Vdc/12Vdc 15W
- RD910/A** strengthened heater 110/240Vac
- RD910/B** strengthened heater 24/12Vac-dc
- TP910** anti-tamper switch set
- VI910** built-in blower set
- TC910** stainless steel sunshield
- ST910** stainless steel wall bracket and joint
- PMTC** cable glands set composed by no.2x M25 cable glands for for unarmoured cable.
- PNPT** cable glands set composed by no.2x 3/4"NPT cable glands for for unarmoured cable.
- TPM25** M25 cap for closing the rear hole

RELATED PRODUCTS



- SP/C** stainless steel AISI 316L pole adaptor
- SA/C** stainless steel AISI 316L corner adaptor
- STS910** ceiling adaptor (available only with ST910 wall bracket)
- SP/T** parapet bracket with joint

CERTIFICATIONS

ATEX

- | | | |
|---|----------------------------|------------------|
|  | II 2G Ex db IIC T6 Gb | Ta-40°C to +60°C |
| | II 2D Ex tb IIIC T85°C Db | Ta-40°C to +60°C |
|  | II 2G Ex db IIC T5 Gb | Ta-40°C to +75°C |
| | II 2D Ex tb IIIC T100°C Db | Ta-40°C to +75°C |

IECEX

- | | | |
|---|----------------------|------------------|
|  | Ex db IIC T6 Gb | Ta-40°C to +60°C |
| | Ex tb IIIC T85°C Db | Ta-40°C to +60°C |
|  | Ex db IIC T5 Gb | Ta-40°C to +75°C |
| | Ex tb IIIC T100°C Db | Ta-40°C to +75°C |

MECHANICAL

- usable internal space: see following page
- weatherproof rating: IP66/67/68
- indoor/outdoor installations
- operating temperature with heater: from -20°C to +60°C or from -40°C to +60°C (strengthened heater)
- weight
406 version: 10,5 Kg.
506 version: 12,0 Kg.

GERMANIUM GLASS

- useful window Ø58mm.
- antireflection treatment
- external non-scratch treatment (carbon coating)
- spectral range from 7,5 to 14µm

NORME DI RIFERIMENTO:

- **ATEX DIRECTIVE 2014/34/EU** of the European Parliament and of the Council of 26 February 2014 on the harmonisation of the laws of the Member States relating to equipment and protective systems intended for use in potentially explosive atmospheres
- **EN 60079-0:2012 / IEC 60079-0:2011 + IS1:2013** : Explosive atmospheres - Part 0: Equipment - General requirements + A11:2013 **EN / IEC 60079-1:2014** : Explosive atmospheres - Part 1: Equipment protection by flameproof enclosures 'd'
- **EN / IEC 60079-31:2014** : Explosive atmospheres - Part 31: Equipment dust ignition protection by enclosure 't'

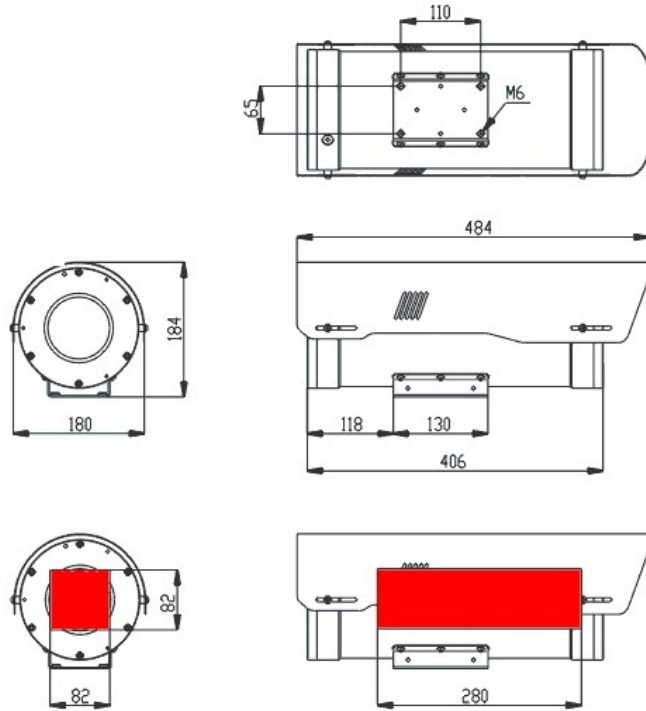
model	unit weight (Kg.)	package dimensions (cm.) WxHxL	gross weight (Kg.)
EXCMA940 Thermal	406 version: 10,5 (tot.) 506 version: 12,0 (tot.)	30,0 x 30,0 x 60,0	406 version: 10,9 (tot.) 506 version: 12,4 (tot.)

DATASHEET

TECHNICAL DRAWINGS

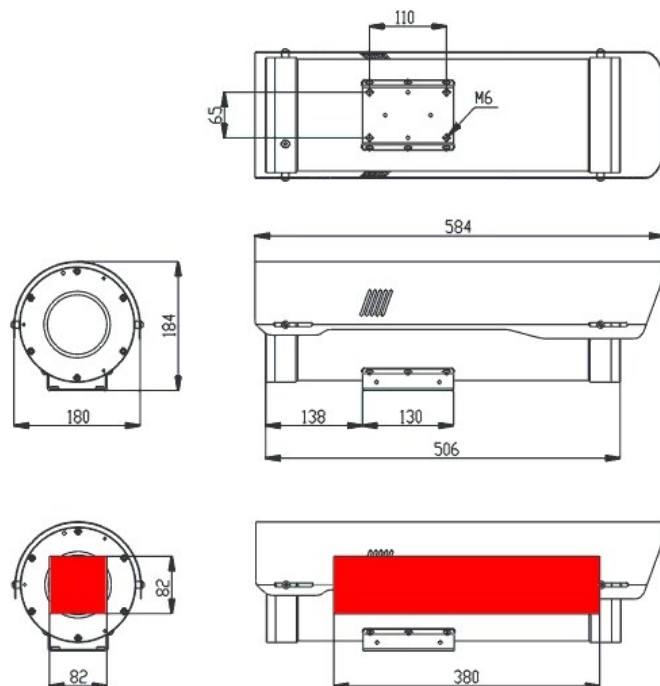
Model 406

**MAXIMUM DIMENSIONS OF THE
CAMERA + OPTICAL LENS
(THAT CAN BE INSTALLED)**



Model 506

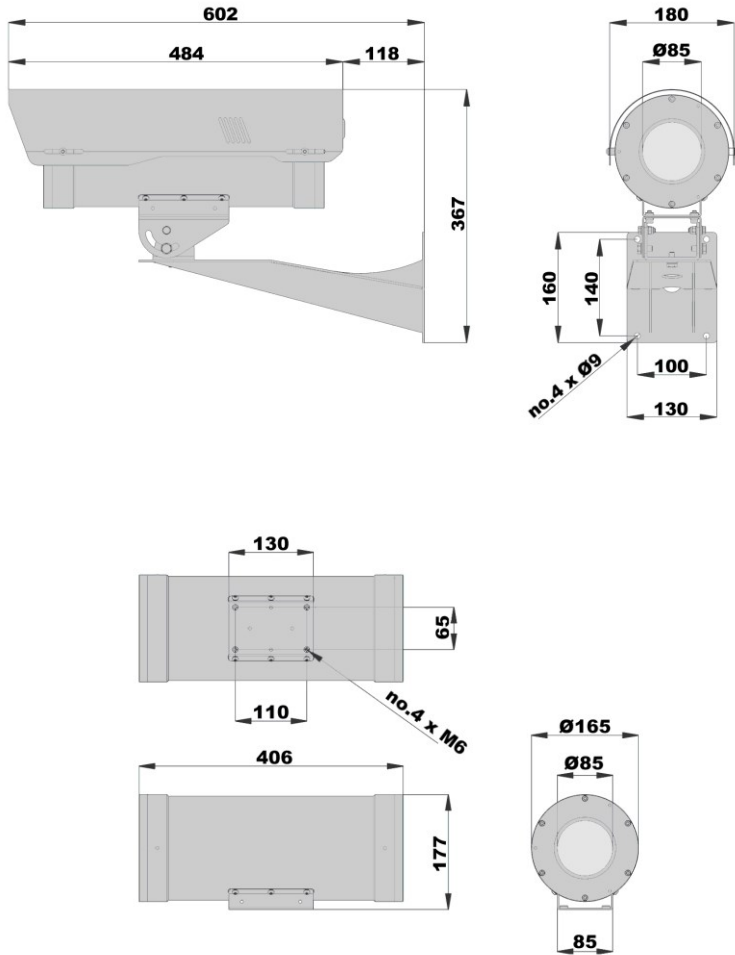
**MAXIMUM DIMENSIONS OF THE
CAMERA + OPTICAL LENS
(THAT CAN BE INSTALLED)**



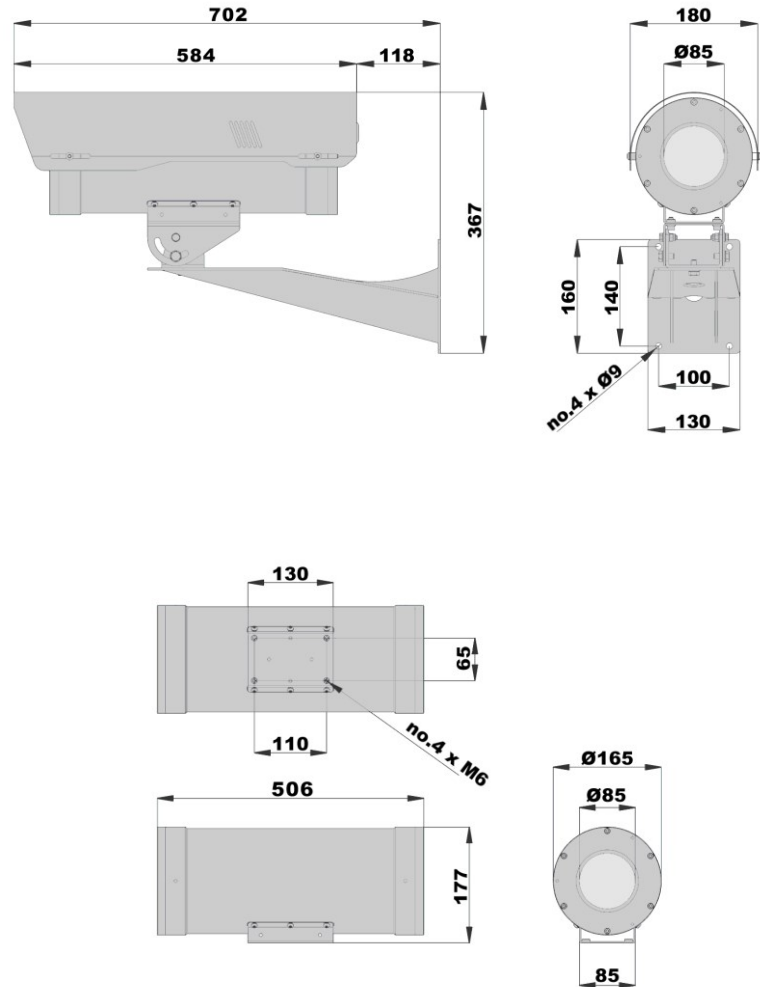
the values are in millimeters

DATASHEET

406 Version



506 Version



the values are in millimeters