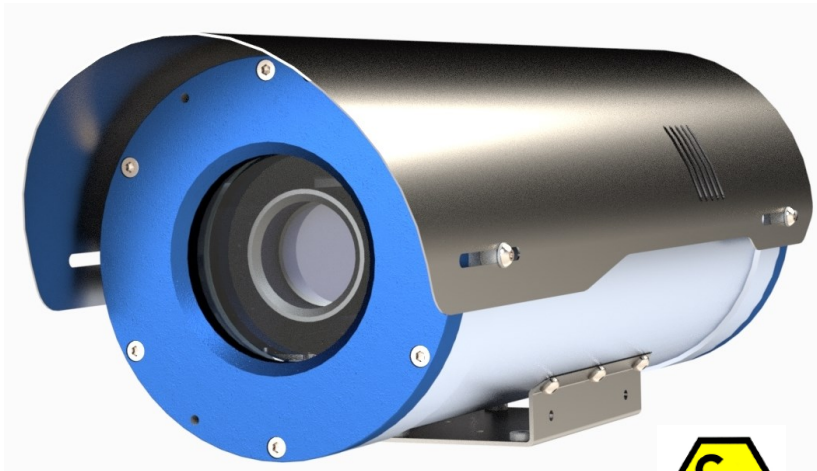


# DATASHEET

## EXCMA910-IPcam6010

### Explosion proof IP camera

- Anticorodal aluminium ATEX IP camera for hazardous areas
- Certifications EX d for use in Zone 1 and 2, Group IIC (gas) and Ex tb Zone 21 and 22 (dust)
- Weatherproof rating IP66/67/68
- Dynamic range for the reliable acquisition of details in situations of overexposure.
- Max. 2Megapixel (1920 x 1080) resolution
- 4.44 ~ 142.6mm Optical 32x zoom
- Max. 60fps@all resolutions (H.265 / H.264)
- H.265, H.264, MJPEG Codec, Multiple streaming
- Day & Night (ICR), WDR (120dB), Defog
- Intelligent Dynamic Noise Reduction.
- **ONVIF®** certification
- Possibility to wall or ceiling mounting by apposite brackets
- Easy installation and maintenance



#### Explosion proof IP camera made of AISI 316L stainless steel

The **EXCMA910-IPCam6010** is an explosion proof outdoor-ready IP camera with 32x motorized zoom, made of Anticorodal aluminium with galvanic treatment. This solution ensures a high corrosion resistance and is particularly indicated for installations in marine, industrial and chemical environments, where there is a potentially explosive atmosphere.

This outdoor-ready IP camera can be equipped with a full range of solutions: sealing ring for unarmoured cable, sealing ring for steel wire armoured (SWA) cable, barrier gland for unarmoured cable and barrier gland for steel wire armoured (SWA) cable.

# DATASHEET

## TECHNICAL DATA

### GENERAL

- body made of Anticorodal aluminium
- galvanic treatment for excellent resistance to extreme environments
- stainless steel bolts and screws
- wide range of accessories
- supplied with instruction manual
- according to RoHS compliance

### ELECTRICAL

- heater: 230-110Vac, 12Vdc, PoE \*  
consumption max. 80W \*  
t on +15°C t off +22°C (+/- 3°C)  
*(\*depends from the model)*

### ACCESSORIES



- RD910/A** strengthened heater 110/240Vac
- RD910/B** strengthened heater 12V-dc
- TP910** anti-tamper switch set
- VI910** built-in blower set
- TC910** stainless steel sunshield
- ST910** stainless steel wall bracket and joint
- PMTc** cable glands set composed by no.2x M25 cable glands for for unarmoured cable.
- PNPT** cable glands set composed by no.2x 3/4"NPT cable glands for for unarmoured cable.
- TPM25** M25 cap for closing the rear hole

### RELATED PRODUCTS



- SP/C** stainless steel AISI 316L pole adaptor
- SA/C** stainless steel AISI 316L corner adaptor
- STS910** ceiling adaptor (available only with ST910 wall bracket)
- PT910** parapet bracket with joint

### CERTIFICATIONS

#### ATEX

- |   |                            |                  |
|---|----------------------------|------------------|
|  | II 2G Ex db IIC T6 Gb      | Ta-40°C to +60°C |
|   | II 2D Ex tb IIIC T85°C Db  | Ta-40°C to +60°C |
|  | II 2G Ex db IIC T5 Gb      | Ta-40°C to +75°C |
|   | II 2D Ex tb IIIC T100°C Db | Ta-40°C to +75°C |

#### IECEX

- |   |                      |                  |
|---|----------------------|------------------|
|  | Ex db IIC T6 Gb      | Ta-40°C to +60°C |
|   | Ex tb IIIC T85°C Db  | Ta-40°C to +60°C |
|  | Ex db IIC T5 Gb      | Ta-40°C to +75°C |
|   | Ex tb IIIC T100°C Db | Ta-40°C to +75°C |

### MECHANICAL

- glass window Ø 85mm
- weatherproof rating: IP66/67/68
- indoor/outdoor installations
- operating temperature: from -20°C to +60°C  
or from -40°C to +60°C (strengthened heater)
- weight : 11 Kg.

### REFERENCE NORMS:

- **ATEX DIRECTIVE 2014/34/EU** of the European Parliament and of the Council of 26 February 2014 on the harmonisation of the laws of the Member States relating to equipment and protective systems intended for use in potentially explosive atmospheres
- **EN 60079-0:2012 / IEC 60079-0:2011 + IS1:2013** : Explosive atmospheres - Part 0: Equipment - General requirements + A11:2013 **EN / IEC 60079-1:2014** : Explosive atmospheres - Part 1: Equipment protection by flameproof enclosures 'd'
- **EN / IEC 60079-31:2014** : Explosive atmospheres - Part 31: Equipment dust ignition protection by enclosure 't'

# DATASHEET

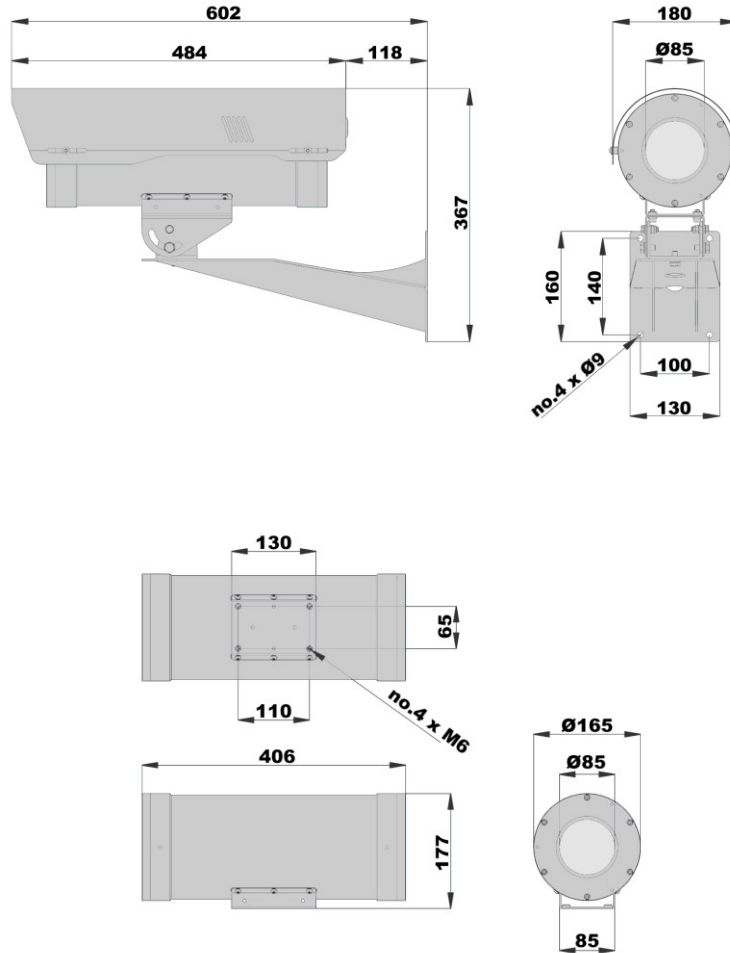
Video	
Imaging Device	1/2.8" 2MP CMOS
Effective Pixels	1944(H)x1212(V)
Min. Illumination	Color: 0.05 lux(F1.6, 1/30sec) B/W: 0.005 lux(F1.6, 1/30sec)
Video Out	CVBS: 1.0 Vp-p / 75Ω composite, 720x480(N), 720x576(P), for installation
Lens	
Focal Length (Zoom Ratio)	4.44~142.6mm(32x) motorized varifocal
Max. Aperture Ratio	F1.6(Wide) ~ F4.4(Tele)
Angular Field of View	H: 61.8°(Wide)~2.19°(Tele), V: 36.2°(Wide)~1.24°(Tele)
Min. Object Distance	1.5m(4.92ft)
Focus Control	Auto, One shot AF
Lens Type	DC auto iris
Operational	
Camera Title	Displayed up to 85 characters
Day & Night	Auto(ICR)
Backlight Compensation	BLC, HLC, WDR, SDR
Wide Dynamic Range	120dB
Digital Noise Reduction	SSNR V
Digital Image Stabilization	Support
Defog	Support
Motion Detection	8ea, 8point polygonal zones
Privacy Masking	32ea, polygonal zones - Color: Grey/Green/Red/Blue/Black/White - Mosaic
Gain Control	Low / Middle / High
White Balance	ATW / AWC / Manual / Indoor / Outdoor
LDC	Support
Electronic Shutter Speed	Minimum / Maximum / Anti flicker (2~1/12,000sec)
Video Rotation	Flip, Mirror
Analytics	Defocus detection, Directional detection, Fog detection, Face detection, Motion detection, Digital auto tracking, Appear/Disappear, Enter/Exit, Loitering, Tampering, Virtual line, Audio detection, Sound classification
Alarm I/O	Input 1ea / Output 1ea
Alarm Triggers	Analytics, Network disconnect, Alarm input
Alarm Events	File upload via FTP and E-Mail Notification via E-Mail SD/SDHC/SDXC or NAS recording at Event Triggers Alarm output Handover
Audio In	Selectable(Mic in/Line in), Supply voltage: 2.5VDC(4mA), Input impedance: 2K Ohm

# DATASHEET

Audio Out	Line out, Max. output level: 1Vrms
<b>Network</b>	
Ethernet	RJ-45(10/100BASE-T)
Video Compression	H.265/H.264: Main/Baseline/High, MJPEG
Resolution	1920x1080, 1280x1024, 1280x960, 1280x720, 1024x768, 800x600, 800x448, 720x576, 720x480, 640x480, 640x360, 320x240
Max. Framerate	H.265/H.264 : Max. 60fps/50fps(60Hz/50Hz) MJPEG: Max. 30fps/25fps(60Hz/50Hz)
Smart Codec	Manual(5ea area) WiseStream II
Bitrate Control	H.264/H.265: CBR or VBR MJPEG: VBR
Streaming	Unicast(20 users) / Multicast Multiple streaming(Up to 10 profiles)
Audio Compression	G.711 u-law /G.726 Selectable G.726(ADPCM) 8KHz, G.711 8KHz G.726 : 16Kbps, 24Kbps, 32Kbps, 40Kbps AAC-LC : 48Kbps at 16KHz
Protocol	IPv4, IPv6, TCP/IP, UDP/IP, RTP(UDP), RTP(TCP), RTCP,RTSP, NTP, HTTP, HTTPS, SSL/TLS, DHCP, FTP, SMTP, ICMP, IGMP, SNMPv1/v2c/v3(MIB-2), ARP, DNS, DDNS, QoS, PIM-SM, UPnP, Bonjour, LLDP, SRTP
Security	HTTPS(SSL) Login Authentication Digest Login Authentication IP Address Filtering User access Log 802.1X Authentication(EAP-TLS, EAP-LEAP)
Edge Storage	Micro SD/SDHC/SDXC 1slot 256GB
Application Programming Interface	ONVIF Profile S/G/T SUNAPI(HTTP API) Wisenet open platform
Web Viewer	Supported OS: Windows 7, 8.1, 10, Mac OS X 10.10, 10.11, 10.12 Recommended Browser: Google Chrome Supported Browser: MS Explore11, MS Edge, Mozilla Firefox(Window 64bit only), Apple Safari(Mac OS X only)
Memory	1024MB RAM, 256MB Flash
<b>Environmental</b>	
Operating Temperature / Humidity	-20°C ~ +60°C (-4°F ~ +140°F) / Less than 90% RH
Storage Temperature / Humidity	-50°C ~ +60°C(-58°F ~ +140°F) / Less than 90% RH
<b>Electrical</b>	
Input Voltage	110-240Vac, 12Vdc or PoE(IEEE802.3af, Class3) <i>depends of the model</i>
Power Consumption	PoE : Typical 4.8W (max. 30W with heater ON) 110/240Vac-dc,12Vdc : Typical 3.5W (max. 30W with heater ON)
<b>Mechanical</b>	
Material	Anticorodal aluminium with galvanic treatment
Product dimensions / weight	Ø180 x 484mm (length), 11Kg

# DATASHEET

## TECNICAL DRAWINGS



*the values are in millimeters*