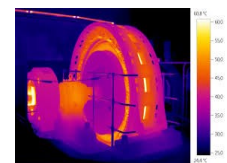
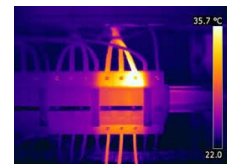


DATASHEET

ARGO200TH

PTZ thermal camera made of AISI 316L stainless steel

- Sturdy AISI 316L stainless steel construction
- 'Top mount' system
- Two versions of Thermal camera: **300** (res.384x288) or **600** (res.640x480) in combination with several lenses: 7,5mm, 13mm, 19mm, 25mm and 35mm
- H.264, MJPEG Codec, multiple streaming
- **ONVIF® Profile S** certified
- IP66/IP67 weatherproof rating



PTZ thermal camera made of AISI 316L stainless steel

ARGO200TH is a PTZ thermal camera made of sturdy electropolished AISI 316L stainless steel, it is equipped with a thermal camera with various resolutions and available lenses.

The high performance and precision of the thermal imaging camera make this product particularly suitable for surveillance of ports, coastal areas, offshore / onshore environments in any weather: total darkness, fog, smoke, etc.

The **ARGO200TH** PTZ is equipped with rapid movement both horizontally and vertically (up to 50 ° / sec), maximum precision and exceptional performance thanks to the thermal camera with 17µm Uncooled Microbolometer sensor, in addition the **ONVIF Profile S** communication protocol ensures perfect compatibility and integration with most popular VMS on the market.

There is a wide range of accessories available: wall bracket, pole adaptor, corner adaptor, etc.

DATASHEET

TECHNICAL DATA

THERMAL CAMERA

Sensor	LWIR a-Si Uncooled Microbolometer 17µm
Resolution (pixels)	384x288, 640x480
Thermal sensitivity of the sensor (NETD)	<50mK @ f1.0 30Hz 300K
Spectral response	8-14 µm
Video output	RJ-45 (10/100Base-T)
Athermalized lenses	7,5mm, 13mm, 19mm, 25mm, 35mm
Camera characters	On/Off 20 characters, 5 lines
Integrated motion detection	On/Off (3 rectangular areas)
Frame rate	25/50Hz
Brightness	Manual setting: 0~100
Gain	Manual setting: 0~100
Auto NUC (non-uniformity correction)	Off/Auto/Time/ Time+Auto
Digital zoom	2x / 4x
Color variations (palette)	GREY, IRON, RAIN_V1, RAINBOW, HALF GREY, YELLOW, MIDGREY, FIRE, BLUE RED (tot.:9 colors)
Heat threshold	0~100
Image sharpening	On/Off (edge sharpness only)
Digital noise filter (DNS)	SSNR (2D), Noise filter (On/off)
Image rotation	Flip: On/Off, Mirror: On/Off
Intelligent video analytics	Motion detection
Alarm events	Motion detection
Temperature alarm events	Not available
OSD control	Pelco D Protocol, RS-485
Function	Tracker: Hot-cold, center indicator
Max. User Access	Max 10 users access (TBD)

Athermalized lens	300IP		600IP	
	HFOV (°)	VFOV (°)	HFOV (°)	VFOV (°)
7.5mm f1.23	47,1°	36.2°	71.9°	57.1°
13mm f1.03	28.2°	21.3°	45.4°	34.9°
14.2mm f1.25	25.9°	19.5°	41.9°	32.0°
19mm f1.03	19.5°	14,7°	32.0°	24.2°
25mm f1.20	14.9°	11.2°	24.5°	18.5°
35mm f1.14	10.7°	8.0°	17.7°	13.3°

DATASHEET

MECHANICAL

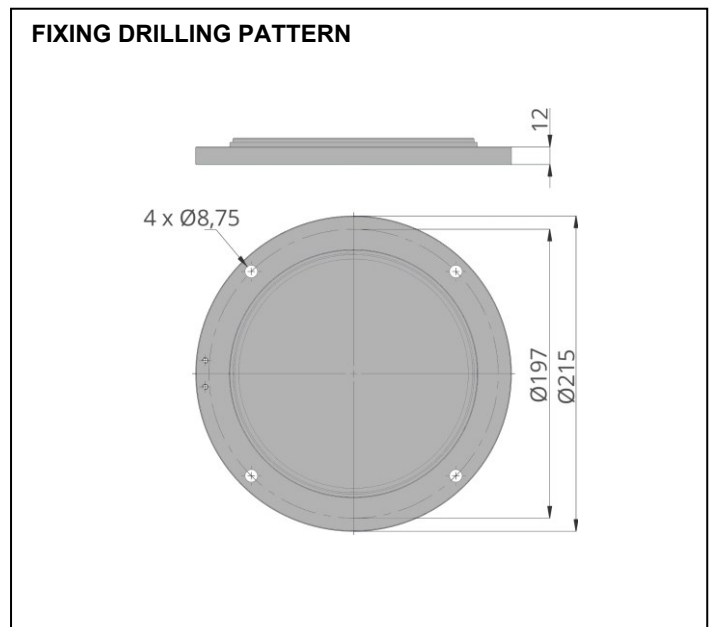
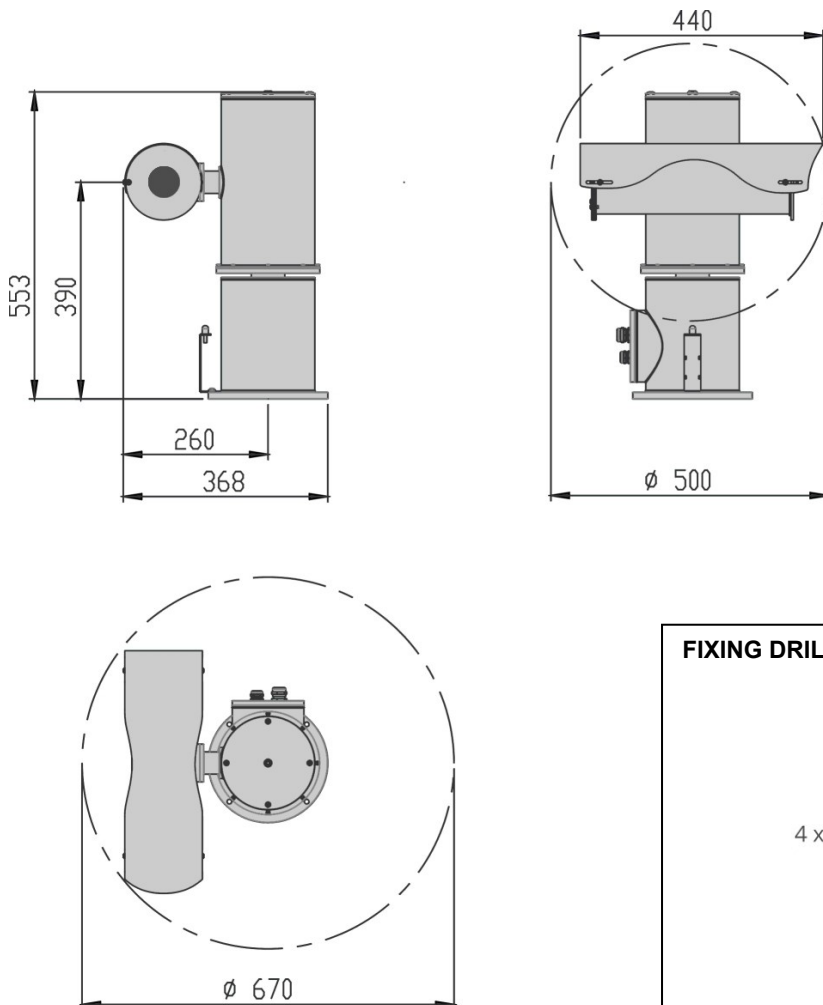
Material	AISI 316L stainless steel with electropolishing treatment
Horiz. movement (Pan)	360° (continuous rotation)
Vert. movement (Tilt)	180° (+/- 90°)
Electronically adjustable speed	Pan: 0 < 50 °/s Tilt: 0 < 50 °/s
Weatherproof rating	IP66/IP67
Cable entry	no.3 M16x1,5 metal cable glands no.1 M25x1,5 metal cable gland
Storage temperature/ Humidity	from -5°C to +60°C (from 23°F to +140°F) /20% - 95 %
Operating temperature/ Humidity	from -30°C to +60°C (from -22°F to +140°F) / 20% - 80%
Consumption	Max. 60W
Power	220/240Vac 50/60Hz - 0,5A 110/120Vac 50/60Hz - 1,1A 24Vac 50/60Hz -5A
Weight	25Kg.
Dimensions	<i>see technical drawings</i>

ACCESSORIES

ST200	Wall bracket
SP/CB	Pole mount adapter
SA/CB	Corner mount adapter

DATASHEET

TECHNICAL DRAWINGS



All the dimensions are expressed in millimeters